

# THE CHOICE

FOR **HEALTHCARE APPAREL**  
& **FACILITY SERVICES PROGRAMS**

Solutions for Healthcare Workers, Purchasers, and Facility Managers.





A well-designed, coordinated work apparel program from UniFirst delivers the [professional image](#) you want and helps build team spirit. It's the best way to clearly establish employee identity and generate patient confidence. And with our [specialized healthcare services](#) and facility service products, we also assist in meeting your infection control goals.

Whether it's our specialized garment and microfiber cleaning programs, our floor mat and wiper services, or our germ-killing Provon® and Purell® hand hygiene products, you can count on UniFirst for managed solutions that satisfy your staff, exceed your patients' expectations, and benefit your bottom line.

The products shown here are *just a sampling* of our comprehensive healthcare offering. If you don't see what you're looking for, call [800.455.7654](tel:800.455.7654) or click below.

[Request a Quote](#)



# Wash Process & Infection Control

UniFirst managed apparel rental services for healthcare operations include specialized laundering and processing within our strict Product Protection Process (PPP), which features portal-to-portal sanitization controls to ensure a sparkling, germ-free cleanliness you can't get with more traditional laundering methods.

Our proprietary healthcare wash formulas and procedures exceed ASTM, OSHA and CDC protocols, and use EPA registered agents that "ultra" clean to ensure the complete removal of contaminants and produce self-sanitizing effects on fabrics.

Plus, our UniFirst Team Partner employees are specially trained in the many safety procedures and precautions required when servicing the unique needs of our healthcare customers.

**So for hygienically clean, top quality apparel...*trust UniFirst.***

# Scrubs

## Unisex Solid Scrub Tops #4254

- 65/35 poplin, non-reversible
- Extra long cap sleeves
- Reinforced, bartacked v-neck with left breast pocket

**Sizes:** XS-5XL

**Colors:** Black (12), Pewter (51), White (07), Tan (06), Sage (DL), Brown (13), Burgundy (90), Pretty Pink (20), Iris (VT), Navy (05), Ciel Blue (89), Pacific Blue (VU), Dark Teal (HU), Fir Green (HS), Olive (GR)

## Unisex Solid Scrub Pants #1276

- 65/35 poplin, non-reversible
- Easy-glide drawcord closure
- Right hip pocket

**Sizes:** XS-5XL, (Tall: XS-3XL)

**Colors:** Black (12), Pewter (51), White (07), Tan (06), Sage (DL), Brown (13), Burgundy (90), Navy (05), Ciel Blue (89), Dark Teal (HU), Fir Green (HS), Olive (GR)



## Men's V-Neck Scrub Shirts #7249

- Poly/cotton poplin
- Reinforced v-neck and side vents
- Raglan style sleeve
- Left chest pocket with pencil stall

**Sizes:** XS-4XL

**Colors:** Black/Pewter (WA), Brown/Tan (NN), Black/Burgundy (JG), Navy/Burgundy (AK), Navy/Lt. Blue (IA)



*Left color – shirt body; right color – sleeves*



## Women's Print Tunics #7205

- 65/35 poly/cotton poplin in prints
- Set-in sleeves, side vents, and reinforced, bartacked v-neck
- Two lower pockets with scissor holder in right pocket

**Sizes:** XS-3XL

**Prints:** Floating Hearts (UG), Spring Leaves (A2), Fall Leaves (A1), White/Pattern (92), Love Hope Care (NC), Multi (44), Pinwheel Green (VV), Pinwheel Blue (VX), Pinwheel Salmon (VW), Deco Squares (VH), Night Bloom (22), Water Dance (VY)



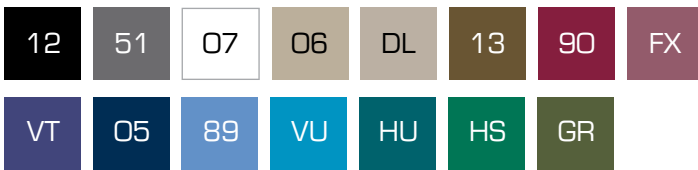
## Women's Solid Scrub Pants #10A5

- 65/35 poly/cotton poplin
- Multi-stitched elastic waistband
- Two side slant inset pockets

**Sizes:** XS-4XL, 31" Inseam

(Petite: XSP-3XLP, 29" Inseam; Tall: XS-3XL, 34" Inseam)

**Colors:** Black (12), Pewter Grey (51), White (07), Tan (06), Sage (DL), Brown (13), Burgundy (90), Eggplant (FX), Iris (VT), Navy (05), Ciel Blue (89), Pacific Blue (VU), Dark Teal (HU), Fir Green (HS), Olive (GR)



## Women's Side Flex Tunics #7256

- 65/35 Fashion Poplin®
- Set-in sleeves
- Concealed front pocket
- Moisture wicking stretchable side panels
- Form-flattering and stylish

**Sizes:** XS-4XL

**Colors:** Pretty Pink/Black (VR), Burgundy/Navy (AN), Burgundy/Black (KV), Iris/Black (VS), Ciel Blue/Navy (VO)



Left color – shirt body; right color – sides



# Scrubs

## Women's Double V-Neck Tunics #7257

- 65/35 Fashion Poplin®
- Set-in sleeves
- Princess seams
- Two lower pockets with contrasting trim
- Contrasting v-neck placket

**Sizes:** XS-4XL

**Colors:** Pewter/Black (VP), Chocolate/Pretty Pink (VL), Eggplant/Plum (VM), Navy/Ciel (VQ), Ciel Blue/Navy (VO), Fir Green/Sage (VN)

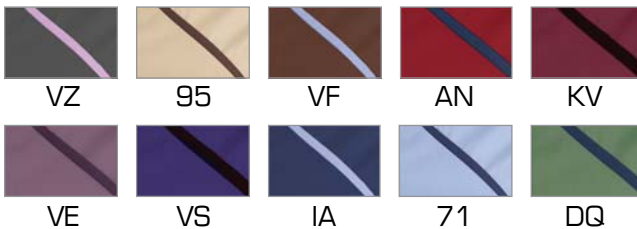


## Women's Cross-Over Tunics #7250

- Poly/cotton poplin
- Two lower pockets with contrasting insets
- Set-in sleeves and side vents
- Back tunnel belt

**Sizes:** XS-4XL

**Colors:** Pewter/Pink (VZ), Tan/Chocolate (95), Chocolate/Ciel Blue (VF), Burgundy/Navy (AN), Burgundy/Black (KV), Plum/Eggplant (VE), Iris/Black (VS), Navy/Lt. Blue (IA), Lt. Blue/Navy (71), Olive/Navy (DQ)



## Women's Flair Scrub Pants #7217

- 65/35 Fashion Poplin®
- Coordinating webbed drawcord
- Elastic waist back
- Two side inset pockets and right hip pocket
- Natural waist and flared legs with side slit

**Sizes:** XS-4XL, 31" Inseam, (Petite: XSP-3XLP, 29" Inseam)

**Colors:** Black (12), Pewter (51), Burgundy (90), Pretty Pink (20), Eggplant (FX), Navy (05), Ciel Blue (89)



## Unisex Solid Warm-Up Jackets #4502

- 65/35 poly/cotton poplin
- Raglan sleeves and coordinating knit cuffs
- Two lower pockets with scissor holder in right pocket
- Snap front closure

**Sizes:** XS-5XL

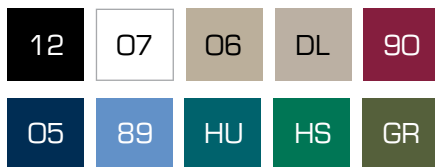
**Colors:** Black (12), White (07), Tan (06), Sage (DL), Burgundy (90), Navy (05), Ciel Blue (89), Dark Teal (HU), Fir Green (HS), Olive (GR)

## Unisex Ultimate Cargo Pants #7245

- 65/35 poly/cotton poplin
- Multi-stitched elastic waistband with inside drawcord
- Left leg double cargo pocket with hook and loop closure for outside pocket
- Two side slant inside pockets
- Right side leg divided cargo pocket with snap scissor tab closure

**Sizes:** XS-5XL

**Colors:** Black (12), White (07), Tan (06), Burgundy (90), Navy (05), Ciel Blue (89), Fir Green (HS)

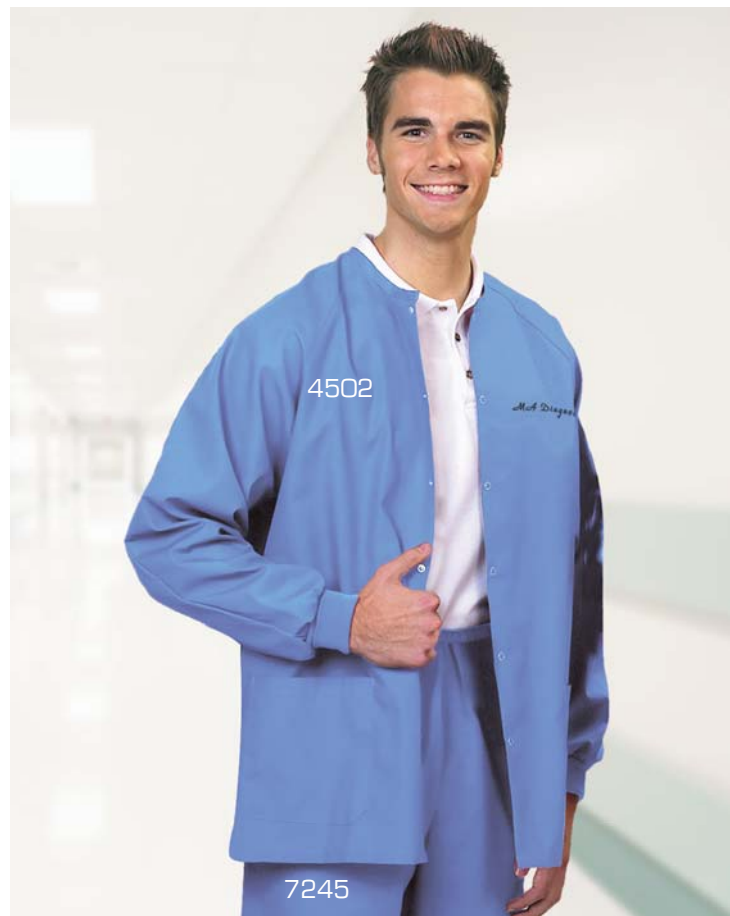


## Women's Warm-Up Jackets #4538

- 65/35 poly/cotton poplin
- Raglan sleeves and coordinating knit cuffs
- Two lower pockets with scissor holder in right pocket
- Snap front closure

**Sizes:** XS-3XL

**Prints:** White/Pattern (92), Love Hope Care (NC), Multi (44)



# Lab Coats

## Women's Lab Coats #2624

- 80/20 poly/cotton poplin
- Notched lapel
- 6-button front
- Left chest pocket
- 2 deep patch pockets

**Sizes:** 34–52 even chest sizes only

**Colors:** White (07), Lt. Blue (09)

## Men's Lab Coats #2524

- 80/20 poly/cotton poplin
- Notched lapel
- 5-button front
- Left chest pocket
- 2 deep patch pockets

**Sizes:** 32–56 even chest sizes only

**Colors:** White (07), Navy (05), Lt. Blue (09)

07

05

09



## Unisex Consultation Lab Coats #25CL

- 65/35 poly/combed cotton twill
- 41" length (based on medium size)
- Button front
- Two chest pockets, separate double pencil stall stitched in left pocket
- Two oversized lower double-pockets with "pocket within a pocket" feature
- Two large inside lower pockets

**Sizes:** XS–3XL

**Color:** White (07)

## Unisex Protective Lab Coats #25BD

- Texture Shield® "fluid-resistant" barrier (front and sleeves)
- Concealed snap closure on front placket with adjustable neck
- Pass-through side openings, back vent and knit cuffs
- Left chest pocket and two lower pockets
- Complies with OSHA's Rule 29CFR Part 1910.1030

**Sizes:** XS–4XL

**Colors:** White (07), Navy (05), Ciel Blue (89)

07

05

89



## Static Control (ESD) Counter Coats #2539

- 65/34/1 Poly/Cotton/Carbon
- Carbon filament grid for static control (ESD)
- Meets ANSI/ESD S20.20-1999
- Left chest pocket and front patch pockets
- Lapel collar, snap closures on front and sleeves

**Sizes:** XS-5XL

**Colors:** White (07), Lt. Blue (09)

## Static Control (ESD) Lab Coats #2542

- 65/34/1 Poly/Cotton/Carbon
- Carbon filament grid for static control (ESD)
- Meets ANSI/ESD S20.20-1999
- Left chest pocket and front patch pockets
- Lapel collar, snap closures on front and sleeves

**Sizes:** XS-5XL

**Colors:** White (07), Lt. Blue (09)

07

09

## Counter Coats #2526

- 80/20 poly/cotton
- Blazer style with notched lapel
- 3-button closure
- Left chest patch pocket and front patch pockets

**Sizes:** 38-56 even chest sizes only

**Colors:** White (07), Red (10), Navy (05), Lt. Blue (09)

07

10

05

09



# Smocks & Aprons

## Women's Short Sleeve Smocks #4520

- 80/20 poly/cotton poplin
- Notched collar
- Two deep patch pockets
- 4-button closure

**Sizes:** S-2XL

**Colors:** White (07), Tan (06), Red (10), Navy (05), Lt. Blue (09)

## Women's Long-Sleeve Smocks #4523

- 80/20 poly/cotton poplin
- Notched collar
- Two deep patch pockets
- 5-button closure
- Cuffed sleeves

**Sizes:** S-2XL

**Colors:** White (07), Navy (05), Lt. Blue (09)

## Women's ¾ Sleeve Smocks #4544

- 80/20 poly/cotton poplin
- Notched collar
- Two deep patch pockets
- 4-button closure

**Sizes:** S-2XL

**Colors:** White (07), Red (10), Navy (05), Royal (25), Lt. Blue (09)



## Cobbler Aprons #7011

- 80/20 poly/cotton poplin
- Adjustable side ties and front divided pocket

**One size fits all**

**Colors:** Black (12), Tan (06), Red (10), Navy (05), Royal (25), Lt. Blue (09), Kelly (23)



# Pocketless Polos & Patient Wear

## Men's Pocketless Polos #077A

- 50/50 poly/cotton mesh knit
- Banded collar with hemmed short sleeves
- 3-button placket with wood tone buttons
- Straight bottom hem with extended tail

**Sizes:** S-4XL

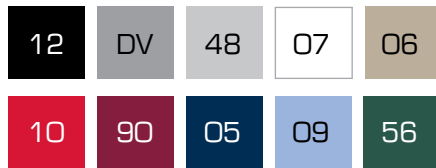
**Colors:** Black (12), Lt. Grey (48), White (07), Tan (06), Red (10), Burgundy (90), Navy (05), Lt. Blue (09), Hunter Green (56)

## Women's Pocketless Polos #0579

- 100% spun polyester
- Fashion knit collar with hemmed short sleeves
- 3-button placket with wood tone buttons
- Tapered waist with flared bottom

**Sizes:** XS-4XL

**Colors:** Black (12), Heather Grey (DV), Navy (05)



## Exam Jackets #14AD

- 65/35 poly/cotton poplin
- Inside and outside waist ties for easy examination and modesty (allows exam while maintaining shoulder and back coverage)

**One size fits all**

**Color:** Mauve (EF) – shown above



## Patient Gowns #9414

- 55/45 cotton/poly
- 4.0 oz. drill
- Full overlap back with side ties
- 45" length, 63" sweep with hemmed bottom

**Regular and plus sizes available**

**Print:** Blue/White (19) – shown above

[Request a Quote](#)

# Hand Hygiene

## Provon® Skin Care

Provon skin care products by GOJO® are designed for healthcare environments. Dermatologist-tested with built in moisturizers, they gently and effectively cleanse, protect, and keep skin healthy. Use as part of a total skin care regimen to simplify hand hygiene, encourage compliance with cleanliness standards and control infection.

Provon Foaming Medicated Handwash	1250 ml	#1958
Provon Foam Dispenser	1250 ml	#1957
Provon Antimicrobial Lotion Soap	800 ml	#1960
Provon Bag-in-Box Dispenser	800 ml	#1959
Provon Foaming Medicated Handwash	1200 ml	#19AH
Provon Touchless Foam Dispenser	1200 ml	#19AG



## Purell® Hand Sanitizer

Purell, the recognized leader in waterless hand sanitizers has been proven 99.99% effective in killing the most common germs. The Centers for Disease Control (CDC) strongly recommends instant hand sanitizers, like Purell, for disinfecting hands when soap and water are not readily available.

Purell Instant Hand Sanitizer	4 oz. Bottle	#1999
	8 oz. Bottle	#1955
Purell Hand Sanitizer	800 ml	#1920
Purell Dispenser	800 ml	#1919
Purell Instant Hand Sanitizer Foam	1200 ml	#1976
Purell Foam Dispenser	1200 ml	#1975
Purell Surgical Scrub w/ Moisturizers	1200 ml	#1979
Purell Surgical Scrub Dispenser	1200 ml	#1978



## Medical Grade Vinyl Gloves

Powder-free and powdered options; latex free; for food, child care, medical, manufacturing environments. Sizes: S-XL; Color: Clear (BZ)

<b>AMMEX Powder-Free Gloves</b> 100 gloves/box	Small	#99V9-BZ
	Medium	#99W1-BZ
	Large	#99W3-BZ
	X-Large	#99W5-BZ
<b>AMMEX Powdered Gloves</b> 100 gloves/box	Small	#99V1-BZ
	Medium	#99V3-BZ
	Large	#99V5-BZ
	X-Large	#99V7-BZ



## Exam Grade Stretch Vinyl Gloves

Extra-stretch construction; form-fitting to minimize muscle tension; for food, child care, medical, manufacturing environments. Sizes: S-XL; Color: Natural (DG)

<b>AMMEX Powder-Free Gloves</b> 100 gloves/box	Small	#99U3-DG
	Medium	#99U5-DG
	Large	#99U7-DG
	X-Large	#99U9-DG

## Textured Latex Gloves

Micro-roughened for excellent gripping; reduced protein level; for food, medical, automotive, manufacturing environments. Sizes: S-XL; Color: Clear (BZ)

<b>GlovePlus Powder-Free Gloves</b> 100 gloves/box	Small	#99H0-BZ
	Medium	#99I1-BZ
	Large	#99I2-BZ
	X-Large	#99I3-BZ

## Textured Nitrile Gloves

High-performance medical grade; superior puncture resistance with unsurpassed tactile sensitivity; for automotive, medical, child care, industrial environments. Sizes: S-XL; Color: Clear (BZ)

<b>AMMEX Powder-Free Gloves</b> 100 gloves/box	Small	#99H6-BZ
	Medium	#99H7-BZ
	Large	#99H8-BZ
	X-Large	#99H9-BZ

Medical grade, no latex proteins; superior tactile sensitivity with textured finger tips for secure grip; for automotive, medical, child care, industrial environments. Sizes: XS-XL; Color: Light Blue (09)

<b>GlovePlus Powder-Free Gloves</b> 100 gloves/box	X-Small	#99T2-09
	Small	#99T4-09
	Medium	#99T6-09
	Large	#99T8-09
	X-Large	#99U1-09

## High Density, Textured Nitrile Gloves

Medical grade 8 mil thickness to resist rips and tears; extra 12-inch length for greater protection; for automotive, medical, child care, industrial environments. Sizes: M-XL; Color: Light Blue (09)

<b>GlovePlus Powder-Free Gloves</b> 50 gloves/box	Medium	#99W7-09
	Large	#99W9-09
	X-Large	#99X2-09



Case quantities available upon request for all medical gloves.

# 4-Step Facility Service System

## Step 1



Capture dirt and moisture at entrances with Scraper Mats.

## Step 2



Grab hold of residual soiling with decor enhancing Walk-Off Mats.

## Step 3



Maintain spotless floors, counters, and hard surfaces with mops and wipers.

## Step 4



Keep restrooms well-stocked with high quality soap, paper, and air freshener products.

Our unique 4-Step Facility Service System ensures a safer, cleaner, healthier, and more attractive environment, and reduces overall housekeeping and maintenance costs at the same time.

## Functional Floor Mats

UniFirst Scraper and Walk-Off mats reduce tracked-in dirt. Anti-Fatigue mats reduce muscle and joint fatigue. "Wet Area" mats prevent slips and falls.

UniScrapper™	2 x 3 ..... #5390	4 x 6 ..... #5389
Scraper Mats	3 x 5 ..... #5388	
Great Impressions®	3 x 5 ..... #76AQ	3 x 10 ..... #76AS
Walk-Off Mats	4 x 6 ..... #76AR	4 x 8 ..... #76AU
Comfort First®	2 x 3 ..... #7752	4 x 6 ..... #7753
Anti-Fatigue Mats	3 x 5 ..... #7751	
Comfort Plus™	2 x 3 ..... #76AF	3 x 9 ..... #76AH
"Wet Area" Mats	3 x 5 ..... #76AT	



All UniFirst manufactured floor mats are certified as "high traction" by the National Floor Safety Institute (NFSI).

## Microfiber Mops, Wipers & Dusters

Microfiber cleaning products are the smart choice for healthcare facilities. Technologically advanced, they demonstrate "superior microbial removal" and use less water and chemicals as compared to conventional cleaning products. When used properly, our microfiber programs help control infection, boost worker productivity, and lower costs. Microfiber cleaning products have been proven to remove up to 98% of bacteria and 93% of viruses from surfaces using only water.<sup>1</sup>

<sup>1</sup> Test performed by the U.S. Environmental Protection Agency. Published in *Environmental Best Practices for Health Care Facilities: Using Microfiber Mops in Hospitals*.



### Microfiber Hook-and-Loop Dust Mops

Designed for trapping dust particles with a looped fringe to capture larger debris.

18" ..... #8418-IG    24" ..... #8424-IG    36" ..... #8436-IG



### Microfiber Canvas-Backed Dust Mops

Picks up three times more dirt and dust than outdated traditional cotton dust mops.

18" ..... #8432-IG    36" ..... #8434-IG    60" ..... #8441-IG  
24" ..... #8433-IG    48" ..... #8435-IG

# Microfiber Products



## Microfiber Scrubbing Wet Mops

This super absorbent wet pad has cut-end fibers interwoven with polypropylene strips to allow for greater cleaning effectiveness and scrubbing action.

18" Green.....#8423-08	18" Yellow ..... #8423-17
18" Red .....#8423-10	18" Blue ..... #8423-09



## Microfiber Wet Tube Mops

Provides superior cleaning performance while leaving less liquid on floors during cleaning. Combining the benefits of microfiber with the simplicity of traditional wet mops.

Medium (400 gm).....#8449-08	Large (500 gm) ..... #8450-08
------------------------------	-------------------------------



## Microfiber Wiping Towels

Lint free, streak free, hypoallergenic, and resistant to the growth of bacteria. Use dry for common dusting on elevated surfaces, or use wet for superior cleaning on frequently touched surfaces.

### Multi-Purpose

White..... #8438-07	Lt. Blue..... #8438-09
Green..... #8438-08	Pink ..... #8438-20
Yellow ..... #8438-17	

### Glass Surface

Lt. Green ....#8437-28
Lt. Blue .....#8437-09



## Microfiber High Duster

Unlike feather dusters which spread dust around, the high duster traps dirt and dust on the sleeve to be efficiently removed from facilities.

Frame ..... #8429-05	Cover..... #8421-09
----------------------	---------------------



## Microfiber Dusting/Wiping Mitt

A "handy" tool for dusting all types of surfaces including finished wood, glass, metal and all types of tile.

80/20P polyester/Polymide..... #8430-09
---



## Microfiber Hardware

Alum. Telescoping Handle/Base	Bucketless System .....#8422-26
72" Handle .....#8419-26	22 oz. or 33 oz. (Direct Sale Only.)
18" Base .....#8425-26	
24" Base .....#8426-26	6 Gallon Bucket.....#8431-09
36" Base .....#8427-26	w/ Drain Basin



We also offer a complete line of restroom products and services not shown. Call 800.455.7654.

**Request a Quote**

# Why UniFirst Rental?

AORN (the Association of periOperative Registered Nurses) recommends that medical attire be laundered by a specialized facility or industrial laundry—*not in the home*.



ECONOMICAL SERVICE

## UniFirst Rental Service lowers overall costs

- Eliminates up-front clothing investment costs
- Reduces inventory requirements, maintenance, and administration
- Includes regular inspections of all garments and products for automatic repairs or replacements
- Provides a dedicated service team to address questions or concerns



PROFESSIONAL IMAGE

## UniFirst healthcare apparel promotes a clean, consistent, and professional staff image

- Provides professional-looking, well fitted work garments
- Coordinates a unified look for all staff members
- Offers practical, high quality choices for all departments
- Delivers clean, finished ready-for-wear work garments
- Improves security and identification



GARMENT SAFETY

## UniFirst managed healthcare apparel programs complement overall infection control initiatives

- Assures hygienically-clean garments with our Product Protection Process
- Helps minimize cross-contamination risks in medical environments
- Meets or exceeds OSHA and CDC guidelines for healthcare laundering processes
- Keeps work clothing safe for staff and patients alike



IMPROVED HYGIENE

## UniFirst hand-hygiene stations and facility services programs improve safety and cleanliness

- Enhances hygienically clean patient care
- Improves facility cleanliness and infection control practices
- Features Provon® and Purell® hand hygiene products from GOJO
- Includes functional floor mats and advanced microfiber cleaning products
- Ensures automatic delivery and restocking, so products never run out

UniFirst is a member of AORN (Association of Operating Room Nurses), APIC (Association for Professionals in Infection Control and Epidemiology), ASHES (American Society for Healthcare Environmental Services), NADONA (National Association Directors of Nursing Administration), NFSI (National Floor Safety Institute), the U.S. Green Buildings Council (USGBC) and the Canada Green Building Council (CaGBC).

UniFirst is a contracted supplier to the following Healthcare GPOs: Amerinet, ASCEND, CHAMPS, MedAssets, and Premier Healthcare Alliance.